



MIS | MGUIDE
Prosthetic Guide

MIS[®]

Guided Prosthodontics in Immediate Loading Procedures

The MGUIDE Prosthetic Guide is a custom-made template, designed to assist in positioning an immediate screw-retained provisional bridge following a guided surgery procedure.

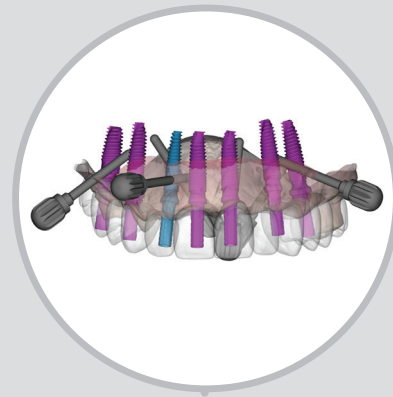
The most challenging aspect of immediate loading is transitioning from surgery to prosthodontics. With the combination of the MGUIDE Surgical Guide and the Prosthetic Guide, there is an elegant and smooth workflow involving the clinician, the digital lab, and the MCENTER.

This innovation is a breakthrough in the field of digital dentistry and brings a real added value to the process of immediate loading.

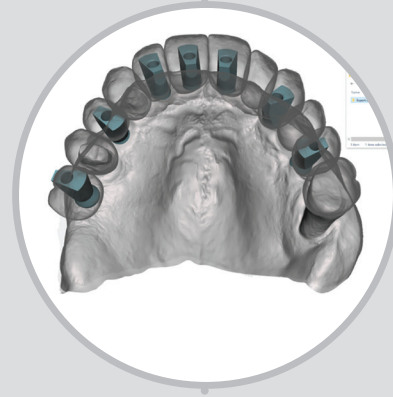


Prosthetic Guide Workflow

- 1. Surgical plan review**
The case, planned by MCENTER, is reviewed and approved by the surgeon.



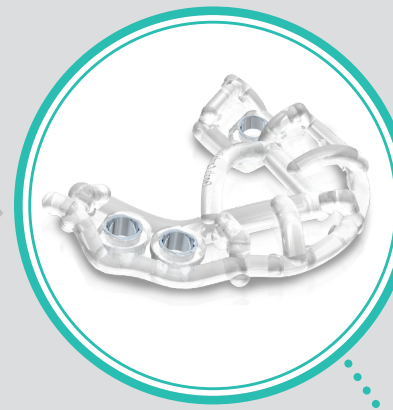
- 2. Surgical plan file**
MCENTER exports the approved surgical plan as STL and sends it to the surgeon.



- 3. Prosthetic review**
The surgeon sends the STL file to the lab. The lab designs the provisional bridge, exports the design file to STL and sends it back to the surgeon.



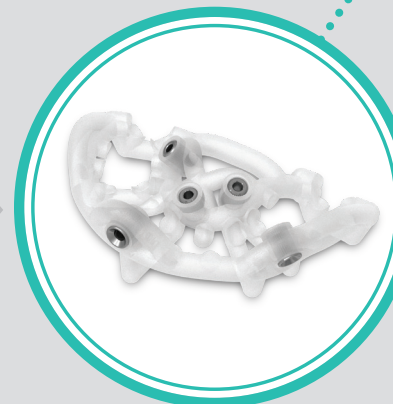
- 4. Prosthetic file**
The surgeon sends the STL of the bridge to the MCENTER.



Surgical guide
MCENTER designs and prints the surgical guide.



Delivery
The surgical and prosthetic guides are supplied to the surgeon.



Prosthetic guide
MCENTER designs and prints the prosthetic guide.

Benefits



Accurate

The prosthetic guide is anchored with fixation pins using the same reference points as the surgical template - aligning the provisional prosthetics with the preoperative plan.



Efficient

Placing provisional prosthetics without needing to make reoccurring occlusal adjustments contributes to a shorter and an efficient procedure than ever before.



Advanced

Upgrade your practice using high-tech innovative digital dentistry!



mis | MAKE IT SIMPLE

www.mis-implants.com

The MIS Quality System complies with the international quality standard ISO 13485: 2016 - Quality Management System for Medical Devices, with Medical Device Directive 93/42/EEC, and with EU Medical Device Regulation MDR 2017/745.